

# **BUSH FIRE MITIGATION NOTICE 2024/25**



**PLAY YOUR PART IN KEEPING OUR  
COMMUNITY SAFE FROM BUSH FIRES**

Please read this notice carefully and store it for  
future reference.

# CONTENTS

Key dates	4
Zone map	5
Your responsibilities	
• Lots with and without assets	6-7
• Properties 1ha-20ha	8-9
• Properties greater than 20ha	10
• Properties greater than 10,000ha	10
• Plantations & tree farms	11
AFDRS	12
Rural land operation requirements	13
Handy contacts	14
Cooking restrictions	14

## DEFINITIONS OF BUSH FIRE TERMS

**Assets:** Buildings on properties.

**Asset Protection Zone (APZ):** The area surrounding a building that is managed to reduce the bush fire hazard to an acceptable level.

**Firebreak:** An area that is ploughed, cultivated, scarified, chemically sprayed, slashed or otherwise cleared of flammable material to a maximum vegetation height of 50mm.

**Total Fire Ban (TFB):** These are imposed by the Department of Fire and Emergency Services (DFES) and prohibit any activity likely to cause a fire (not including agricultural activities).

**Harvest and Vehicle Movement Ban (HVMB):** These are imposed by the Shire and prohibit any harvesting activity or operation of any internal combustion engine unless on a formed road or the driveway to your property.

## FOR LANDOWNERS & OCCUPIERS

All Shire of Plantagenet landowners and occupiers (including lessees) must prepare their property for bush fire season. This includes vacant land, townsite lots, rural residential lots and broadacre farm land.



### **Heavy penalties apply for non-compliance**

Pursuant to the powers contained in Section 33 of the Bush Fires Act 1954, owners and/or occupiers are required to comply with bush fire mitigation measures outlined in this notice, by the dates provided.

Non-compliance may result in an infringement or prosecution. The Shire may also engage a contractor to carry out the required work (Section 33 (4) of the Bush Fires Act 1954) at the cost of the owner or occupier (Section 33 (5) of the Bush Fires Act 1954).

## KEY DATES

### EASTERN ZONE

Camping and cooking fires prohibited  
3 October–30 April

Restricted burning time  
3 October–14 November

Prohibited burning time  
15 November–28 February & Good Friday

Restricted burning time  
1 March–30 April

Mitigation measures to be in place by 15  
November and remain until 30 April

### WESTERN ZONE

Camping and cooking fires prohibited  
3 October - 30 April

Restricted burning time  
2 November–14 December

Prohibited burning time  
15 December–28 February & Good Friday

Restricted burning time  
1 March–30 April

Mitigation measures to be in place by 15  
December and remain until 30 April

Dates may vary due to seasonal conditions.

**Western Zone Restricted Burning Time**

2 November to 30 April

**Prohibited Burning Time**

15 December to 28 February and Good Friday

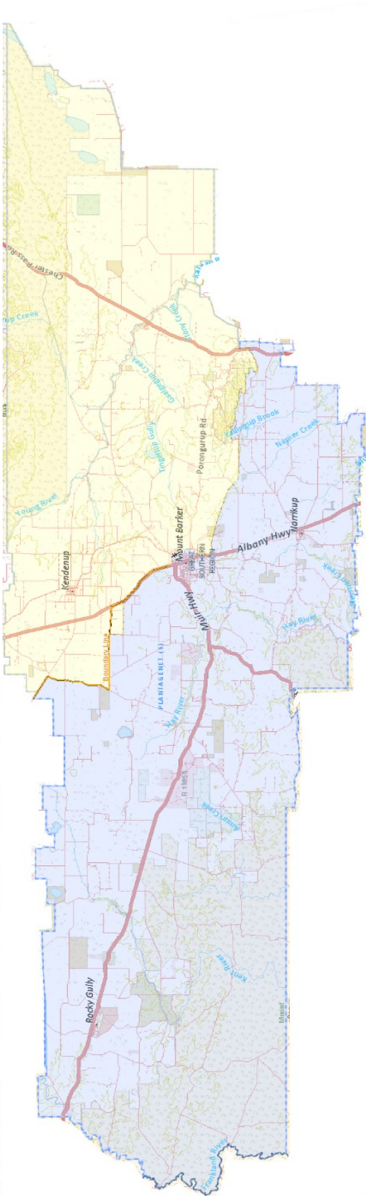
**Eastern Zone Restricted Burning Time**

3 October to 30 April

**Prohibited Burning Time**

15 November to 28 February and Good Friday

**ZONE MAP**



**Camping and Cooking Fires are prohibited from  
3 October until 30 April**

## PROPERTY REQUIREMENTS

### Lots with and without assets, up to and including 1 hectare

- Graze or slash grass to 100mm.
- If 70% or more of the lot is covered by vegetation other than grass or managed garden beds, create a firebreak around or within 10m of the property boundary. The firebreak must be cleared of flammable material, be 4m wide (minimum) and have an overhead clearance of 4m (minimum) to allow safe passage for fire trucks.
- Bush areas may require parkland clearing, mulching or removal of dead vegetation, bark and leaf litter.
- If 70% or more of the property is covered by vegetation other than grass, managed garden beds or a seed producing crop, a fire break is required around or within 10m of the property boundary.



## PROPERTY REQUIREMENTS

### **Lots with and without assets, up to and including 1 hectare**

Lots with assets need an APZ. The zone must:

- Extend a minimum of 20m from any external walls of buildings, or up to your property boundary if this falls within the 20m zone.
- Include only reticulated lawns, gardens and managed vegetation.
- Maintain grass to 50mm or less.
- Trim trees so that no branches overhang the buildings, with lower branches at least 2m from the ground.
- Not contain firewood piles.
- Gutters to be kept free of leaves and branches.
- Slash or graze the grass to no greater than 100mm high in town sites, and harvest crops to 200mm.
- Both firebreaks and driveways must be cleared of flammable material, be a minimum of 4m wide and have a minimum overhead clearance of 4m to allow safe passage for fire trucks.

### **Fire Management Plans**

This is in addition to the requirements of this notice. Where a Fire Management Plan has been implemented as part of a subdivision, property owners must ensure their property meets the requirements outlined in the Fire Management Plan.

## PROPERTY REQUIREMENTS

**All properties greater than 1 hectare and up to, and including, 20 hectares**

- An asset protection zone must be maintained.
- Slash or graze the grass to no more than 100mm high in town sites, and harvest crops to 200mm.
- Both firebreaks and driveways must be cleared of flammable material, be a minimum of 4m wide and have a minimum overhead clearance of 4m.
- If 70% or more of the property is covered by vegetation other than grass, managed garden beds or a seed producing crop, a firebreak is required around or within 10m of the property boundary.

If your land is permanently and sufficiently stocked, there is no need to slash. Livestock must graze the grass down to no more than 100mm high in town sites or 200mm high on properties up to 20 hectares.

During a HVMB, feeding and watering of animals requires a 400L OPERATIONAL FIREFIGHTING UNIT either attached to, or to accompany any vehicle that is feeding or watering the animals.

### **Contiguous leased blocks**

If your primary or adjoining leased property is less than 20 hectares, but the contiguous managed land parcel is greater than 20 hectares, they will be regarded as one land parcel.



# PROPERTY REQUIREMENTS

All properties greater than 1 hectare and up to, and including 20 hectares



Sheds, abandoned buildings, haystacks, fuel storage and any other asset on all properties greater than 1 hectare and up to, and including 20 hectares

- Clear a firebreak 20-100m from the perimeter of sheds, hay stacks and fuel storage. This firebreak must be cleared of flammable material, be a minimum of 4m wide and have a minimum overhead clearance of 4m.
- The area between the firebreak and sheds, hay stacks and fuel storage is to be kept in a hazard reduced state with grass and/or vegetation limited to 100mm in height.
- Hay stored beyond 100m of assets does not require a firebreak.
- Abandoned buildings must be clearly marked by a sign and have the same requirements as a shed.

# PROPERTY REQUIREMENTS

## Properties greater than 20 hectares

- Must have an Asset Protection Zone.
- Driveways into the property must be cleared of flammable material, be a minimum of 4m wide and have a minimum overhead clearance of 4m to allow safe passage for fire trucks.
- A firebreak no less than 20m and no more than 100m from the perimeter of sheds, hay stacks and fuel storage. This firebreak is to be cleared of flammable material, be a minimum of 4m wide and have a minimum overhead clearance of 4m.
- The area between the firebreak and sheds, hay stacks and fuel storage is to be kept in a hazard reduced state with grass and/or vegetation limited to 100mm in height.
- Hay stored beyond 100m of any asset does not require a firebreak.

## Properties greater than 10,000 hectares

- Requirements the same as 20 hectare + properties, as well as a 3.4 heavy duty appliance (4x4 truck carrying 3,000 litres of water) must be located within the property boundary.

# PLANTATION REQUIREMENTS

## Plantations & tree farms

These are defined as areas exceeding 3 hectares within townsites, or 10 hectares in rural areas, of trees planted or land under preparation for planting of trees for commercial purposes.

- Firebreaks must be constructed on all boundaries, or other locations as agreed to by Council.
- For a full list of requirements for plantations and tree farms, see [www.plantagenet.wa.gov.au/services/fire-and-ranger-services/fire-and-emergency-management/bushfire-mitigation-for-plantations-and-tree-farms](http://www.plantagenet.wa.gov.au/services/fire-and-ranger-services/fire-and-emergency-management/bushfire-mitigation-for-plantations-and-tree-farms)



## Australian Fire Danger Rating System



The Australian Fire Danger Rating System (AFDRS) provides you with the information you need to assess any bush fire risks. There are five levels.

**Catastrophic (red):** for your survival, leave bush fire risk areas. If a fire starts and takes hold, lives are likely to be lost.

**Extreme (orange):** take action now to protect your life and property. Reconsider travel through bush fire risk areas.

**High (yellow):** be ready to act. Decide what you'll do if a bush fire starts.

**Moderate (green):** plan and prepare. Most fires can be controlled. Stay up-to-date and be ready to act if there is a fire.

**All clear (white):** minimal risk. No action required.

Keep up-to-date with ratings and bush fire warnings at [emergency.wa.gov.au](http://emergency.wa.gov.au).

# MINIMUM REQUIREMENTS FOR RURAL LAND OPERATIONS DURING RESTRICTED AND PROHIBITED BURNING TIMES

Type of operation	Requirements
Seed harvesting Timber harvesting Swathing (except canola) Slashing Baling straw/stubble Stone chaining Operation of a portable sawmill	A mobile fire fighting unit with a minimum of 400L to be stationed in, or immediately adjacent to, the area where the operation takes place and within 1km of the operating machine.
Operation of welding equipment in the open air and power operated abrasive cutting discs	A mobile fire fighting unit with a minimum of 400L to be stationed in, or immediately adjacent to, the area where the operation takes place. A fire extinguisher at the place where the operation is carried out. Where welding or cutting is carried out, a 5m radius around the equipment must be cleared of all flammable material to bare earth. In addition, an observer must be on hand to monitor the site at all times.
Operation of tractors, trucks and self propelled harvesters in standing crop or stubble paddocks	An operational fire extinguisher must be carried on the vehicles.

**If these minimum requirements are not in place, and a fire is started by one of these operations, the person responsible for starting the fire may be liable for the cost of fighting the fire.**

## HANDY CONTACTS

FOR ALL BUSH FIRE EMERGENCIES CALL 000

If you have questions about your fire mitigation responsibilities, call the Shire on **9892 1111** or see the website: [www.plantagenet.wa.gov.au](http://www.plantagenet.wa.gov.au).

Call the Shire of Plantagenet Harvest Ban Hotline on **9892 1102** for updates on active bans and restricted and burning time dates.

For information on TFBs, call the TFB Hotline on **1800 709 355** or visit [dfes.wa.gov.au](http://dfes.wa.gov.au).

To find out about volunteering with your local bushfire brigade, call **1800 238 657**.

## COOKING RESTRICTIONS

Unauthorised fires are prohibited on all Shire land throughout the year. This includes reserve, campsites and road verges (permits must be obtained to burn council road verges).

Cooking on private land with solid fuel can be done during restricted times providing:

- There is not a fire rating of high or above.
- The fire is clear of flammables (3m).
- The fire is fully contained.
- The fire is attended at all times.
- Sufficient water is available to extinguish the fire.
- The fire and any remnants are completely extinguished with no possibility of reignition prior to leaving the site.