

Council

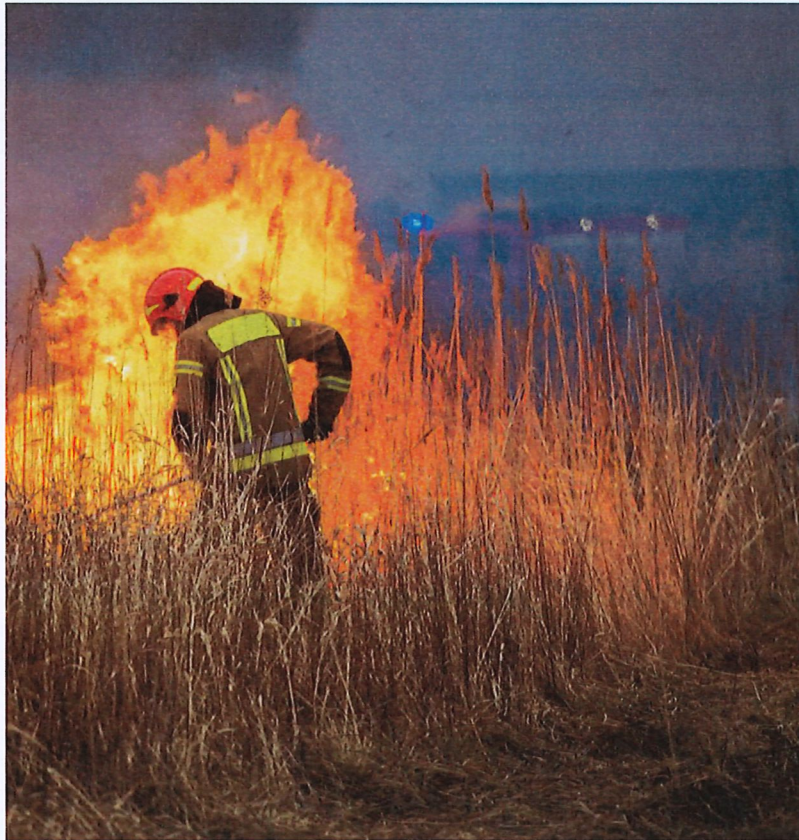
BUSH FIRE MITIGATION NOTICE 2024/2025

Approved Document

Meeting Date: 28 May 2024

Number of Pages: 15

**BUSH FIRE
MITIGATION
NOTICE
2024/2025**



**PLAY YOUR PART IN KEEPING OUR
COMMUNITY SAFE FROM BUSH FIRES**

Please read this notice carefully and store it for
future reference.

CONTENTS

Key dates	4
Zone map	5
Your responsibilities	
• Properties up to 1 hectare	6
• Properties 1 hectare to 20 hectares	7-8
• Properties greater than 20 hectares	9
• Properties greater than 10,000 hectares	10
• Plantations and tree farms	11
Australian Fire Danger Rating System	12
Rural land operation requirements	13

DEFINITIONS OF BUSH FIRE TERMS

Assets: Buildings on properties.

Asset Protection Zone (APZ): The area surrounding an asset that is managed to reduce the bush fire hazard to an acceptable level.

Firebreak: An area that is ploughed, cultivated, scarified, chemically sprayed, slashed, or otherwise cleared of flammable material to a maximum vegetation height of 50mm.

Total Fire Ban (TFB): A TFB is declared by the Department of Fire and Emergency Services (DFES). A TFB prohibits any activity likely to cause a fire (not including agricultural activities).

Harvest and Vehicle Movement Ban (HVMB): A HVMB is issued by the Shire and prohibits any harvesting activity or operation of any internal combustion engine unless on a formed road or the driveway to your property.

FOR LANDOWNERS & OCCUPIERS

All Shire of Plantagenet landowners and occupiers (including lessees) must prepare their property for bush fire season. This includes vacant land, townsite lots, rural residential lots and broadacre farm land.



Heavy penalties apply for non-compliance

Pursuant to the powers contained in Section 33 of the Bush Fires Act 1954, owners and/or occupiers are required to comply with bush fire mitigation measures outlined in this notice by the dates provided.

Non-compliance may result in an infringement or prosecution. The Shire may also engage a contractor to carry out the required work (Section 33(4) of the Bush Fires Act 1954) at the cost of the owner or occupier (Section 33(5) of the Bush Fires Act 1954).

KEY DATES

EASTERN ZONE

Camping and cooking fires prohibited
3 October to 30 April

Restricted burning time
3 October to 30 April

Prohibited burning time
15 November to 28 February and Good Friday

Mitigation measures to be in place by 15 November
and remain in place until 30 April

Property compliance inspections
15 November to 30 April

WESTERN ZONE

Camping and cooking fires prohibited
3 October to 30 April

Restricted burning time
2 November to 30 April

Prohibited burning time
15 December to 28 February and Good Friday

Mitigation measures to be in place by 15 December
and remain in place until 30 April

Property compliance inspections
15 December to 30 April

Dates may vary due to seasonal conditions.

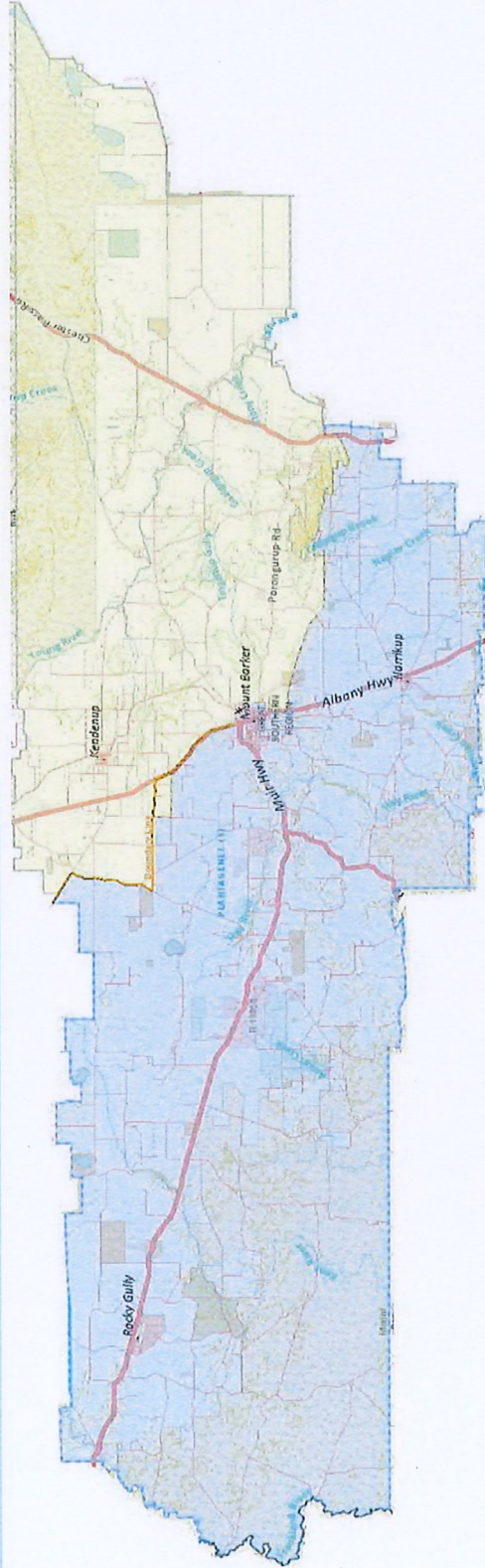
ZONE MAP

Eastern Zone Restricted Burning Time
3 October to 30 April

Prohibited Burning Time
15 November to 28 February and Good Friday

Western Zone Restricted Burning Time
2 November to 30 April

Prohibited Burning Time
15 December to 28 February and Good Friday



Camping and cooking fires are prohibited from
3 October until 30 April

PROPERTY REQUIREMENTS

Lots with and without assets, up to and including 1 hectare

- Graze or slash grass to 100mm.
- If 70% or more of the lot is covered by vegetation other than grass or managed garden beds or a seed producing crop, a firebreak is required around or within 10 metres of the property boundary. The firebreak must be cleared of flammable material, be a minimum of 4 metres wide and have a minimum overhead clearance of 4 metres to allow safe passage for fire trucks.
- Bush areas are to be kept in a hazard reduced state. This can be achieved by parkland clearing, mulching or removal of dead vegetation, bark and leaf litter.

Lots with assets require an APZ. The following conditions apply to the APZ.

- It must extend a minimum of 20 metres from any external walls of an asset, or up to your property boundary if this falls within the 20 metre zone.
- It should include only reticulated lawns, gardens and managed vegetation.
- Grass must be maintained to 50mm or less.
- Trees should be trimmed so that no branches overhang the asset, with lower branches at least 2 metres from the ground.
- No firewood piles.
- Gutters are to be kept free of leaves and branches.

PROPERTY REQUIREMENTS

All properties greater than 1 hectare and up to, and including, 20 hectares

- Properties with assets require an APZ.
- If 70% or more of the property is covered by vegetation other than grass or managed garden beds or a seed producing crop, a firebreak is required around or within 10 metres of the property's external boundary.
- Both firebreaks and driveways must be cleared of flammable material, be a minimum of 4 metres wide and have a minimum overhead clearance of 4 metres to allow safe passage for fire trucks.
- Slash or graze the grass to no more than 100mm high in town sites, and harvest crops to 200mm on properties up to 20 hectares.
- If your land is permanently and sufficiently stocked with livestock, there is no need to slash. Livestock must graze the grass down to no more than 100mm high in town sites or 200mm high.
- During a HVMB, feeding and watering of animals requires a 400 litre OPERATIONAL FIREFIGHTING UNIT either attached to, or to accompany any vehicle that is feeding or watering the animals.

Contiguous leased blocks

If your primary or adjoining leased property is less than 20 hectares, but the contiguous managed land parcel is greater than 20 hectares, they will be regarded as one land parcel.

PROPERTY REQUIREMENTS

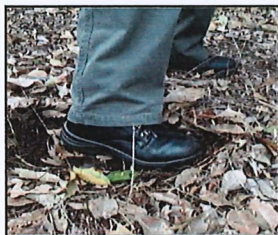
All properties greater than 1 hectare and up to, and including 20 hectares (continued)

The following conditions apply to properties that have sheds, abandoned buildings, haystacks, fuel storage and any other assets.

- Clear a firebreak 20 to 100 metres from the perimeter of sheds, hay stacks and fuel storage. The firebreak must be cleared of flammable material, be a minimum of 4 metres wide and have a minimum overhead clearance of 4 metres to allow for safe passage of fire trucks.
- The area between the firebreak and sheds, hay stacks and fuel storage is to be kept in a hazard reduced state with grass and/or vegetation limited to 100mm in height.
- Hay stored beyond 100 metres of assets does not require a firebreak.

Fire Management Plans

In addition to the requirements of this notice, where a Fire Management Plan has been prepared and approved as part of a subdivision or development, property owners must ensure their property meets the requirements outlined in the Fire Management Plan. Such subdivisions include (but are not limited to) Mia Flores, Stoney Creek and Braidwood Heights.



Bush maintained in a hazard reduced state



Non-compliant fire fuel load

PROPERTY REQUIREMENTS

Properties greater than 20 hectares

- Properties with assets must have an APZ.
- Driveways into the property must be cleared of flammable material, be a minimum of 4 metres wide and have a minimum overhead clearance of 4 metres to allow safe passage for fire trucks.
- A firebreak is to be installed no less than 20 metres and no more than 100 metres from the perimeter of sheds, hay stacks and fuel storage. This firebreak is to be cleared of flammable material, be a minimum of 4 metres wide and have a minimum overhead clearance of 4 metres.
- The area between the firebreak and sheds, hay stacks and fuel storage is to be kept in a hazard reduced state with grass and/or vegetation limited to 100mm in height.
- Hay stored beyond 100 metres of any asset does not require a firebreak.

Abandoned Buildings

- Abandoned buildings must be clearly marked by a sign and have the same requirements as a shed.
- A compliant sign shall have the word 'ABANDONED BUILDING' in red with lettering 150mm high on a white background placed in a clearly visible location.

PROPERTY REQUIREMENTS

Properties greater than 10,000 hectares

- Properties with assets must have an APZ.
- Driveways into the property must be cleared of flammable material, be a minimum of 4 metres wide and have a minimum overhead clearance of 4 metres to allow safe passage for fire trucks.
- A firebreak is to be installed no less than 20 metres and no more than 100 metres from the perimeter of sheds, hay stacks and fuel storage. This firebreak is to be cleared of flammable material, be a minimum of 4 metres wide and have a minimum overhead clearance of 4 metres.
- The area between the firebreak and sheds, hay stacks and fuel storage is to be kept in a hazard reduced state with grass and/or vegetation limited to 100mm in height.
- Hay stored beyond 100 metres of any asset does not require a firebreak.
- A 3.4 heavy duty appliance (4x4 truck carrying 3,000 litres of water) must be located within the property boundary



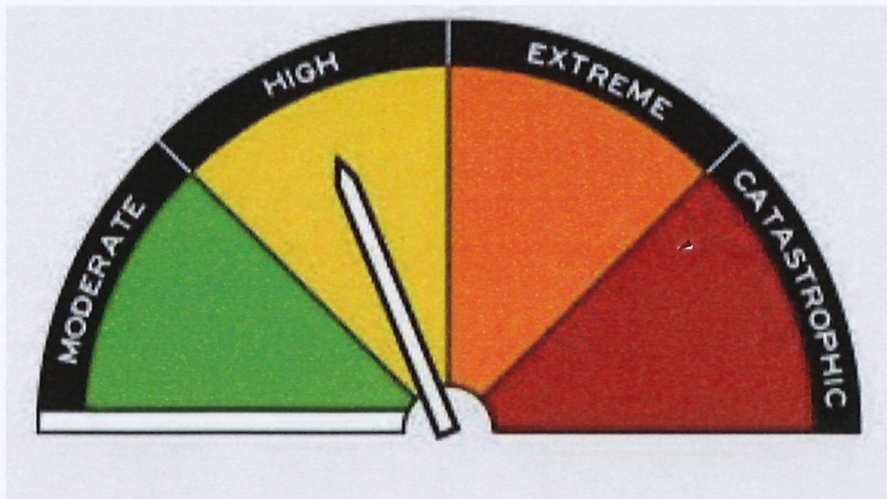
PLANTATION REQUIREMENTS

Plantations & tree farms

These are defined as areas exceeding 3 hectares within townsites, or 10 hectares in rural areas, of trees planted or land under preparation for planting of trees for commercial purposes.

- Firebreaks must be constructed on all boundaries, or other locations as agreed to by Council.
- Boundary firebreaks are to be 15 metres wide. Within this 15 metres, 6 metres are to be as central as possible with a trafficable surface and an overhead clearance of 4 metres. This section is to be maintained as a firebreak. The remaining 9 metres of the firebreak is to be maintained in a hazard reduced state.
- Internal firebreaks are to have a minimum trafficable area width of 6 metres maintained in a hazard reduced state with a minimum overhead clearance of 4 metres.
- A 3.4 heavy duty firefighting appliance (4x4 truck carrying 3,000 litres of water) and crew must be available for deployment to incidents. The combination of appliance and crew should be in reasonable proximity to the Shire of Plantagenet whether it be within the Shire itself or an adjoining Shire.
- For a full list of requirements for plantations and tree farms, visit the Shire website www.plantagenet.wa.gov.au

Australian Fire Danger Rating System



The Australian Fire Danger Rating System (AFDRS) provides you with the information you need to assess any bush fire risks. There are five levels.

Catastrophic (red): For your survival, leave bush fire risk areas. If a fire starts and takes hold, lives are likely to be lost.

Extreme (orange): Take action now to protect your life and property. Reconsider travel through bush fire risk areas.

High (yellow): Be ready to act. Decide what you will do if a bush fire starts.

Moderate (green): Plan and prepare. Most fires can be controlled. Stay up-to-date and be ready to act if there is a fire.

All clear (white): Minimal risk. No action required.

Keep up-to-date with ratings and bush fire warnings at www.emergency.wa.gov.au

MINIMUM REQUIREMENTS FOR RURAL LAND OPERATIONS DURING RESTRICTED AND PROHIBITED BURNING TIMES

Type of operation	Requirements
Seed harvesting Timber harvesting Swathing (except canola) Slashing Baling straw/stubble Stone chaining Operation of a portable sawmill	A mobile firefighting unit with a minimum of 400 litres to be stationed in, or immediately adjacent to, the area where the operation takes place and within 1km of the operating machine.
Operation of welding equipment in the open air and power operated abrasive cutting discs	A mobile firefighting unit with a minimum of 400 litres to be stationed in, or immediately adjacent to, the area where the operation takes place. A fire extinguisher at the place where the operation is carried out. Where welding or cutting is carried out, a 5 metre radius around the equipment must be cleared of all flammable material to bare earth. In addition, an observer must be on hand to monitor the site at all times.
Operation of tractors, trucks and self propelled harvesters in standing crop or stubble paddocks	An operational fire extinguisher must be carried on the vehicles.

If these minimum requirements are not in place, and a fire is started by one of these operations, the person responsible for starting the fire may be liable for the cost of fighting the fire.

HANDY CONTACTS

FOR ALL BUSH FIRE EMERGENCIES CALL 000

If you have questions about your fire mitigation responsibilities, call the Shire **9892 1111** or visit www.plantagenet.wa.gov.au

The Shire of Plantagenet Harvest Ban Hotline - **9892 1102** - provides updates on active bans and restricted and prohibited burning times.

For information on TFBs, call the TFB Hotline on **1800 709 355** or visit www.emergency.wa.gov.au

To find out about volunteering with your local bushfire brigade, call the Shire **9892 1111**.

Unauthorised fires are prohibited on all Shire land throughout the year. This includes reserves, campsites and road verges (permits must be obtained to burn Council road verges).

COOKING FIRE RESTRICTIONS

Cooking on private land with solid fuel can be carried out during restricted times provided the following conditions are met.

- There is not a Fire Danger Forecast rating of high or above.
- The fire has a 3 metre zone clear of flammables.
- The fire is fully contained to prevent escape.
- The fire is attended at all times.
- Sufficient water is available to extinguish the fire.
- The fire and any remnants are completely extinguished prior to leaving the site with no possibility of reignition.