



imagine
PLANTAGENET
STRATEGIC COMMUNITY PLAN

2022/2023 - 2032/2033



OUR VISION

Plantagenet, building a sustainable and respectful community, where the environment is preserved and natural beauty and diversity provide opportunities for all.

OUR MISSION

To enhance the quality of life for the people of Plantagenet and the region, through the provision of leadership, services and infrastructure.



OUR PROFILE AND HISTORY

The Shire of Plantagenet is located in the southern part of the Great Southern Region of Western Australia. Mount Barker, the Shire's commercial centre lies in the middle of the Shire. In addition to Mount Barker, the Shire includes the settlements of Kendenup, Narrikup, Rocky Gully and Porongurup.

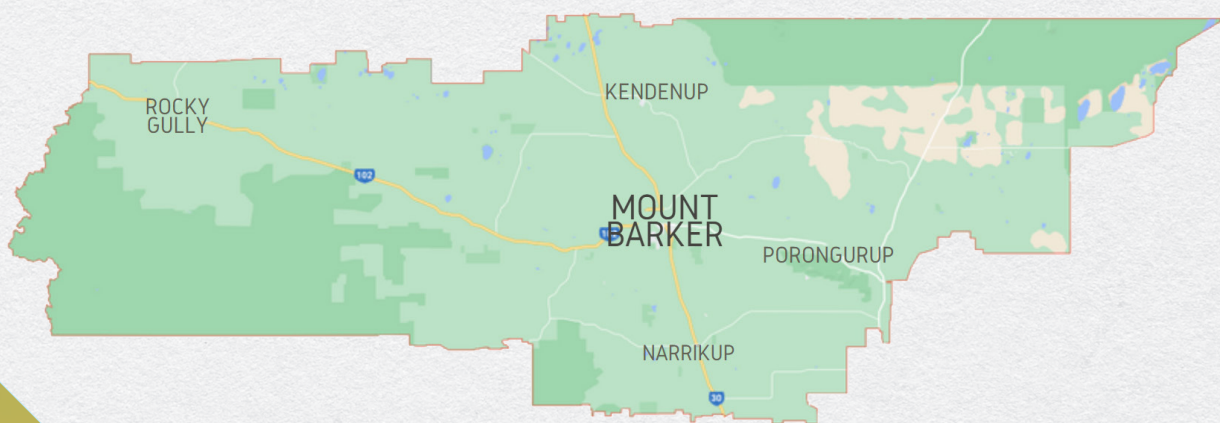
The main economic activities of the region revolve around agriculture and food processing, with a strong basis in local supply chains. The economy of the Shire is changing and diversifying, with a move away from silviculture (tree farming) in recent years and the development of small businesses across other sectors.

Local attractions include the Porongurup Range (including the Granite Skywalk), Stirling Range, several wineries/cellar sales, a museum based within the original police station, St Werburgh's Chapel, Frost Park thoroughbred racing facility, Tower Hill/Pwakkenbak lookout, Roundhouse and Mitchell House Arts Centre.

The area has a proud Noongar heritage and has been home to noteworthy indigenous artists and sportspeople. European settlement of the area dates from the 1830s, with land used mainly for sheep grazing. Population was minimal until the early 1900s when land was subdivided. Gradual growth continued from the post-war years, particularly from the 1980s. Demographics are also changing, with a significant population of Hazara refugees settling in the area and raising young families.

OUR COMMITMENT TO THE COMMUNITY

- Integrity through honesty, ethical behaviour and trustworthiness.
- Professionalism through understanding our roles and responsibility, the need to work efficiently and strive for excellence.
- Supportiveness by being patient, caring and friendly.
- Responsibility by taking ownership.
- Customer focus by understanding needs, being proactive and responsive.





CONTENTS

Our Vision	2
Our Profile and History	3
Our Commitment to the Community	3
Key Statistics for the Shire	5
Integrated Planning and Reporting Framework	6
Progress Reporting	7
Integrated Community Plan Reviews	7
The Shire's Role and Responsibilities	7
How You Can Contribute	8
Summary of Community Engagement	8
What our Community Told Us	9
Summaries of the Key Discussion at Town Hall Meetings	10
What We Know About Our Community	13
Our Infrastructure and Facilities	14
Our Community Services	15
Key Pillars	16
Council Forward Planning Projects	28
Community Book of Ideas	29





KEY STATISTICS FOR THE SHIRE

Distance from Perth (from Mount Barker)	359km	Number of dwellings	2,540
Distance from Albany (from Mount Barker)	51 km	Number of rate assessments	3,519
Population (ABS 2019 ERP)	5,263	Length of sealed roads	400km
Area	4,875 km ²	Length of unsealed roads	943km
Number of elected members (Shire)	9	Number of electors	3,584
		Number of bushfire brigades	11



INTEGRATED PLANNING AND REPORTING FRAMEWORK



** Denotes that plans are in progress or to come.

The diagram above includes the documents that make up the Shire Integrated Planning and Reporting Framework and demonstrates the importance of this document which sets the community’s aspirations and council priorities for all the other plans.

The IPR Framework is based on:

- The State Government’s Blueprint for the region and other relevant policies, plans and strategies from the State and Federal Governments.
- Extensive community engagement on what is important to the people that live within our Shire.
- Input from Elected Members and Staff based on feedback they have received and their strong desire to deliver positive outcomes for their community.
- Current partnerships and projects already being delivered.

PROGRESS REPORTING

The Shire has adopted a traffic light based Quarterly Update to report progress to the Council and the Community against their documented commitments. In addition, results are formally communicated to the community annually via the Annual Report.

INTEGRATED COMMUNITY PLAN REVIEWS

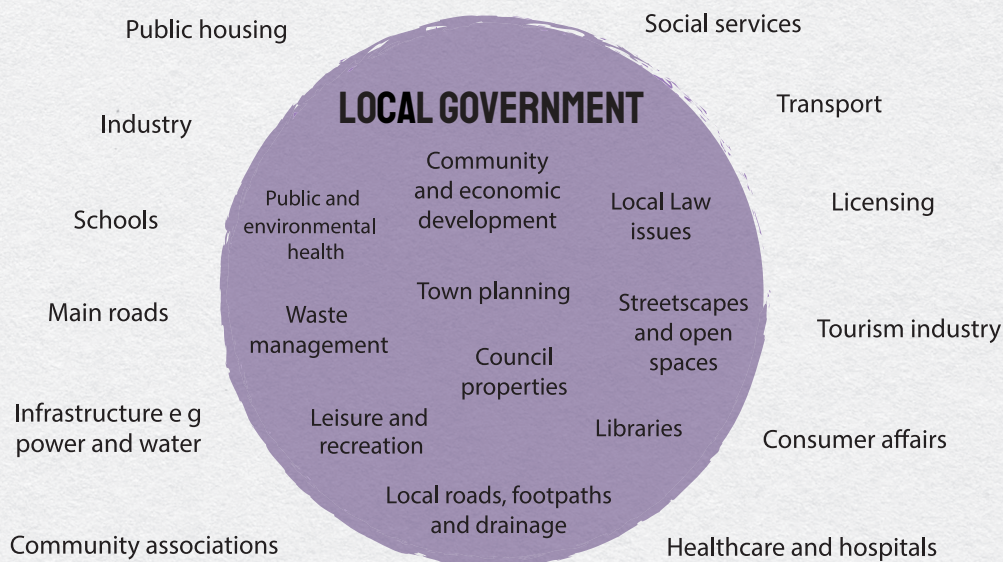
This Strategic Community Plan will be subject to a major review requiring extensive community engagement in 2025 as legislated. In addition, council priorities will be reviewed and updated annually to reflect any changes to regional and local priorities, the budget and to service levels.

THE SHIRE'S ROLE AND RESPONSIBILITIES

The work of Local Government is varied and affects the day to day lives of most people in our community. The Council is committed to serving and recognising the varied needs of its varied communities, from its First Nations people, to descendants of early European settlers, more recent arrivals and our increasingly multicultural residents.

This plan lists the facilities and infrastructure that are maintained and renewed by the Shire of Plantagenet and also provides a summary of the services that are delivered directly by the Shire. In addition, the Shire advocates and provides support for a number of other services that it is not responsible for including, but not limited to:

- Day care which is the responsibility of service providers
- Health care which is the responsibility of WA Country Health and health providers
- Major State road upgrades and maintenance which are the responsibility of Main Roads
- Privately owned infrastructure and buildings which are the responsibility of the owner
- Reliable power supply which is the responsibility of Western Power
- Telecommunications and the internet which is the responsibility of service providers
- DPaW in managing national parks and many reserves
- Educational facilities and services which are managed by the Education Department and TAFE



HOW YOU CAN CONTRIBUTE

- Attend and support local, events and activities
- As a community, celebrate our successes
- Become a volunteer
- Develop leadership and problem-solving skills in young people
- Do regular exercise
- Drive safely
- Get involved in sporting and recreational activities
- Get to know your neighbours
- Have fun in our public spaces
- Join a community group
- Keep your neighbourhood clean and tidy
- Learn about local history
- Look out for others
- Recycle
- Report infrastructure damage

SUMMARY OF COMMUNITY ENGAGEMENT

ENGAGEMENT REACH

Engagement Activity	Date	Venue	Attendees
Kendenup Community Forum	14/09/2021	Kendenup Town Hall	34
Mt Barker Community Forum	28/09/2021	Mt Barker Town Hall	22
Narrikup Community Forum	05/10/2021	Narrikup Town Hall	13
Porongurup Community Forum	07/10/2021	Porongurup Town Hall	39
Business After Hours Forum	21/09/2021	Mt Barker CRC	14
Mt Barker Tourism Board Forum	11/10/2021	Mt Barker Visitor Centre	9
Community Survey		On-line & Hard Copy	158
Total Reach			291



WHAT OUR COMMUNITY TOLD US

The following provides a summary of community priorities emerging from the various engagement forums.

- The peaceful lifestyle, location close to the south coast and Stirling ranges, community spirit, safety and security, caring and supportive neighbours and community facilities, were recurring reasons that people value living in the Shire.
- Importance of road and footpath construction and maintenance.
- Importance of community safety, bushfire prevention and control.
- Access to a high standard of primary and allied health services and the potential to improve the feeling of health and wellbeing within the community.
- Retention of a 'country lifestyle' with accessible and high standard community, education and recreation facilities and services.
- Importance of preserving and protecting biodiversity and the value this brings to the lifestyle across communities.
- Remaining an inclusive and supportive community for all ages and abilities.
- Providing facilities and activities for the youngest and eldest generations of our community.
- A strong partnership between the Shire, business, and tourism.
- Importance of the Council and Shire connecting with our community using innovative communication techniques and tools.

SUMMARIES OF THE KEY DISCUSSION AT TOWN HALL MEETINGS



KENDENUP

The peaceful setting, quiet, and sense of community is valued. The need for youth events in Kendenup was a common theme: although there were some comments about facilities for children and youth, the majority of comments were around providing events. The resounding message was that drainage/sewerage and road improvements are needed: drainage to deal with the mosquito problem, sewerage and road improvements to allow further development.

Although the current low population was valued and expansion not widely supported, it was accepted that the shop in town needs support to be able to continue. Economic diversity was discussed, with jobs outside of manual labour and food processing required. Transport issues were also raised.



MOUNT BARKER

The family friendly nature of the town is valued. Both seniors and youth issues were strongly represented. Seniors' issues included medical costs and service availability, housing and transport – both public and the provision of a community bus. Comments around youth focused on before and after school childcare, school holiday programs, a drop-in centre and improved facilities at Wilson Park. Outdoor recreation opportunities are important. The multicultural and indigenous members of the community should be celebrated, and growth encouraged through migration.

The Shire providing volunteer support was raised, including support with grants. There were calls for the Shire to lobby the State government on relevant issues.



NARRIKUP

Several community members chose Narrikup due to working in Albany but wanting to live in a rural setting. Wanting to be in a bushland/natural environment was important to many. The community connection and sporting opportunities were also strongly valued.

Community events were raised by multiple participants – there were suggestions for markets, movie nights, street parties and seniors' events. The community are keen to drive these suggestions themselves with support from the Shire. Home care services were discussed to enable local residents to age in place, as was public/community transport.

Road safety issues with the Albany Highway intersections were a concern. Conservation of bushland was also a dominant issue. The need for better internet was discussed at length.

Many community members feel strongly about limiting agricultural development near the townsite, particularly piggeries.



PORONGURUP

The conservation of the National Park dominated the conversation. Many residents had long family histories with Porongurup or had specifically moved there to be near to the National Park.

Conservation issues included weed control, road reserve management, better consultation on fire plans, feral animal control and a strong pushback against any development of any kind in the National Park, including trails. Investment in the Porongurup Hall and its facilities was requested. Infrastructure issues included poor internet connectivity. Some Shire maintenance issues were raised, and there was a request for extended business hours at the admin office and more frequent information sessions for the Porongurup community.



ROCKY GULLY

A discussion was held with members of the Rocky Gully community that covered amenity issues in the townsite. It was acknowledged that although some of these problems are the responsibility of private property owners, there are also issues within the Shire's remit. The community feels that improving public spaces would in turn encourage pride by private property owners. The possibility of promotion of the bushland around Rocky Gully for tourism purposes was raised.

BUSINESS SUNDOWNER, CRC

Although this discussion was focused on supporting local business, tourism and economic growth, there were similarities with the town hall sessions. The lack of after school childcare was seen as a limiting factor for women/parents of young families to be able to work locally.

Large events were strongly supported by participants, for example the injection of visitor spends into local businesses from weekend-long festivals. Infrastructure issues included CBD parking, street lighting and the need for reliable and affordable high-speed internet. Prominent amenity issues such as the old school site were raised.

STRATEGIC PRIORITIES

The priorities of the Plantagenet community have been cross-referenced with the Shire of Plantagenet's previous performance in this area by using the Community Scorecard results.

The criteria in the left-hand column are from the Plantagenet Strategic Community Plan survey. The index value is a weighted average of responses, which allows analysis of survey respondents' top priorities.

The priority issues identified to be addressed in this Strategic Plan are where the community has reported prioritising the issue and the Shire's performance has been assessed as inadequate by the community, resulting in a gap in current service delivery. These gaps are highlighted in blue below.

Criteria	Index	2019 Community Scorecard	Index	Gap analysis
Provision and maintenance of roads, grading, sealing	87.90	Building and maintaining local roads	44	High
Bush fire prevention and control	87.82	Natural disaster management (education, prevention and relief for bushfires, flooding)	59	Medium
Access to, support and advocacy for local health services	87.18	Access to health and community services	61	Medium
Provision of parks, play spaces and public open space	86.23	Playgrounds, parks and reserves	66	High
Services and facilities for youth	84.02	Services and facilities for youth	43	High
Support for community groups, volunteers and clubs	82.32	Not covered		High
Consultation, engagement and communication	82.32	How the community is consulted about local issues	43	High
		How the community is informed about what's happening in the local area	54	Medium
Conservation and environmental management including biodiversity, climate change, weed control, water conservation	81.17	Conservation and environmental management	54	High
Sport and Recreation activities, facilities and support	80.85	Sport and recreation facilities	73	Medium
Waste collection, minimisation, management and sustainability	80.57	Waste collection services	53	High
		Efforts to reduce waste	51	High
Provision and maintenance of community buildings, halls and toilets	78.66	Community buildings, halls and toilets	60	Medium
Safety, security and ranger services	77.69	Feeling of safety being out in public in my local community	80	Low
		Safety and security	59	
		Animal and pest control	50	
Natural disaster management and adverse events planning	77.37	Natural disaster management (education, prevention and relief for bushfires, flooding)	59	Low
Economic and tourism development	77.37	Economic development	43	Medium
		Tourism attractions and marketing	51	Medium
Facilities, services and care available for Seniors	77.07	Services and care available for seniors	53	Medium

Criteria	Index	2019 Community Scorecard	Index	Gap analysis
Provision of footpaths, cycleways and trails for access and recreation	76.59	Footpaths, cycleways and trails	42	Medium
Access to services and facilities for people with disabilities	76.58	Access to services and facilities for people with disabilities	48	Medium
Streetscapes, amenity improvement, lighting and development of Town Centres	76.43	Streetscapes	48	Medium
		Lighting of streets and public places	53	Medium
		How the local town centre is being developed	54	Low
Development of education, training and services locally	75.80	Access to education, training and personal development opportunities	57	Low
Heritage and conservation of history	75.47	How local history and heritage is preserved and promoted	63	Medium
Delivery and support for events, arts and cultural activities	74.84	Festivals, events, art and cultural activities	62	
Services and facilities for families and early learning years	73.40	Services and facilities for families and children	57	Medium
Access, support and development of housing options locally	68.91	Access to housing that meets your needs	56	Medium
		Managing responsible growth and development	49	Medium
Access to services and facilities for indigenous and culturally diverse groups	63.22	Not covered		Medium

WHAT WE KNOW ABOUT OUR COMMUNITY

Our Strengths	Our Challenges
Natural environment and biodiversity	Relatively small population and revenue base.
Community spirit	Development costs; added costs to business and developers
Geographical location and proximity	Quality and quantity of housing stock
Good sporting and community facilities	Compliance and cost shifting to the Shire
Good education facilities	Youth education and employment
Volunteers	Meeting and funding the (changing) expectations of ratepayers
Workforce	Meeting the needs of an increasing aging and multi-cultural society
Linkages with other local governments	Mitigating bush fire threat

OUR INFRASTRUCTURE AND FACILITIES

Facility	Service Objective
Core Infrastructure - Roads, Footpaths and Drainage	To provide a well maintained and functional network of core infrastructure that meets the community's requirements while allowing for future growth
Plantagenet Medical Centre	To provide purpose built medical facilities to secure the provision of medical services including doctors, dentist, other health professionals and pathology
Community Buildings, Halls & Public Toilets	To provide meeting places and facilities that are valued by the community and well used
Mount Barker Regional Saleyards	To provide a modern, well maintained and self-supporting cattle saleyards for the beef industry in the Great Southern Region
Local Emergency Volunteers	To provide fit for purpose facilities and equipment for bush firefighting and emergency services and to train / support the volunteers in performing that service
Library	To provide library services that engage the local community and encourage life-long learning
Parks & Gardens	To manage and maintain parks and gardens, so that they are attractive and well used
Refuse Disposal Facilities	To provide waste services which are convenient to the community while meeting our legislative requirements
Community Resource Centre (CRC)	To provide a central meeting space for the community which supports business and volunteer groups.
Recreation Centre, Sporting Ovals, Hockey Ground and Tennis Courts	To provide sporting facilities that are valued by the community and well used
Swimming Pool	To provide a facility where people can learn to swim as well as a safe and active facility for children and families to enjoy
Mount Barker Visitor Centre	To provide a facility for creative promotion of tourism in Mount Barker and the Great Southern Region
Visitor Information Bays	To provide inviting spaces to visitors in prominent places that provides information that makes them want to stay
Mount Barker Historical Museum Complex	To preserve and present our key heritage buildings and house a collection of items that tell stories of life in Western Australia
Kendenup Nature Based Camp Ground	To provide an attractive, safe and inviting facility and experience for visitors to help grow tourism



OUR COMMUNITY SERVICES

Service	Service Objective
Building & planning approvals	To develop the Shire and its infrastructure while ensuring compliance with legislative requirements
Community consultation and engagement	To keep the community informed through various communication platforms and involve them in relevant issues, events, and projects
Council leadership within the Community	To connect with and listen to local people and provide a clear and consistent strategic direction
Customer service	To provide a high level of customer service and access to convenient payment options
Local Emergency Volunteers	To provide support, training and fit for purpose facilities and equipment for our local emergency volunteer network
Cemetery Management	To provide peaceful and dignified cemeteries, where those that have passed can be visited by and remembered by loved ones
Sustainable Land Use	To consider long term, sustainable land management in developing planning strategies and as part of the development application processes
Public Health management	To provide health services that contributes to the health and wellbeing of local residents and visitors
Ranger services	To educate and undertake compliance with relevant legislation and local laws
Natural Resource management	To support conservation and rehabilitation of the natural environment

KEY PILLARS

KEY PILLAR – COMMUNITY

GOAL

Foster community pride, safety, well-being and involvement through the provision of services



ASPIRATIONS

During the stakeholder engagement phase, community members raised the following aspirations:

CHILDREN AND YOUTH

- ^ A Shire with suitable facilities and activities for children and young people
- ^ Working parents of young children supported with childcare services and facilities

Things we're already doing	Things we're planning to do
Youth Advisory Group	Wilson Park Youth Precinct development
Free recreational swimming for Youth at pool facility	Pwakkenbak Mountain Bike Trails Development
School holiday programs	Dedicating more staff resources into community and sport and recreation services.
	Assisting with the development of additional child care facilities

SENIORS AND DISABLED

- ^ Communities where residents can age in place
- ^ An accessible Plantagenet suitable for our current and future residents

Things we're already doing	Things we're planning to do
Supporting Empowering Plantagenet seniors and Plantagenet Village Homes	Improved footpath network
Supporting seniors social and fitness programs, e.g. Long Live You	Supporting Disability Awareness Day with initiatives annually
Supporting Seniors Week annually with partnership events	Improving community infrastructure



HEALTH AND WELLBEING

- ▲ A hospital that meets our needs
- ▲ A healthy and active Plantagenet
- ▲ Varied outdoor recreation and sporting opportunities
- ▲ Access to services and facilities for indigenous and culturally diverse groups

Things we're already doing	Things we're planning to do
Lobbying WACHS and Minister for Health re upgrades to Mount Barker Hospital	Lobbying for improved regional health and mental health services in our region
Expansion of Plantagenet Medical Centre	Upgrades to Mount Barker recreation facilities
Annual Bike Month events	Dedicating more staff resources into community and sport and recreation services, such as taking programs and classes out to town halls

SUPPORT FOR COMMUNITY GROUPS AND VOLUNTEERS

- ▲ Supported and skilled volunteers
- ▲ Volunteer-led associations with clear strategic purpose
- ▲ Fit-for-purpose community facilities

Things we're already doing	Things we're planning to do
Thank a Volunteer Day	Financial Assistance Grant review and policy development
Financial Assistance Grants	Providing and coordinating governance training and support for voluntary associations.
Supporting our local emergency services volunteers	Resourcing bushfire mitigation
Providing club development	
Refugee Welcome Zone and 'Proposer' for members of the Mount Barker Hazara community	



STRATEGIC PRIORITIES

- Provide and promote appropriate and accessible facilities and activities for youth
- Advocate for family support services
- Advocate the provision and promotion of services, home care and facilities that meet the needs of the aged
- An accessible community suitable for current and a future aging community
- Advocate for medical and hospital services within the region
- A healthy and active community
- Encourage and support the retention and attraction of volunteers
- Volunteer organisations have clear strategic purpose
- Ensure Council buildings, facilities and public amenities are provided and maintained to an appropriate standard
- Support the community in emergency and fire management planning, preparedness, response and recovery
- Safety on roads and public open space
- Provide services, facilities and information that are accessible to people of all abilities
- Continue to build relationships with our First Nation and multicultural communities

KEY PILLAR – ENVIRONMENT (BUILT AND NATURAL)

GOAL

Provide and maintain physical infrastructure that supports service delivery as well as protection and care of our natural environment



ASPIRATIONS

During the stakeholder engagement phase community members raised the following aspirations:

ROADS AND PUBLIC SPACES

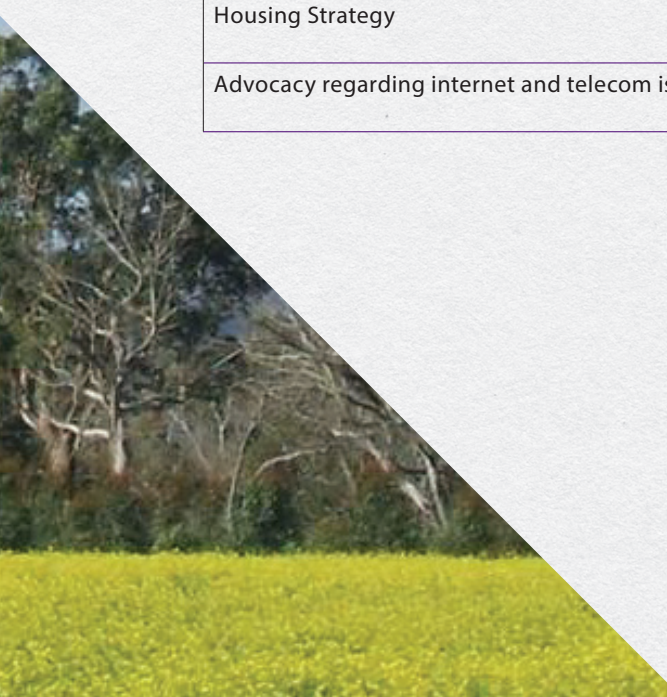
- ⤴ Roads that are safe and fit for purpose
- ⤴ Flexible public open spaces that the whole community can enjoy
- ⤴ A high standard of amenity for pedestrians and traffic

Things we're already doing	Things we're planning to do
Roadworks program	Wilson Park Youth Precinct
Plantagenet Trails Masterplan and Regional Trails Masterplan	Liveability strategy
Albany Highway Beautification project	Albany Hwy Roundabout upgrades and streetscaping projects.
Streetscape Working Group	Electronic Road safety signage.
Footpath Improvement Plan	Drainage improvements and betterment
Walking cycling infrastructure on Pwakkenbak/Tower Hill	
Upgrading Narrikup playground	

INFRASTRUCTURE

- ⤴ A Plantagenet that is planned to meet the needs of future generations
- ⤴ Development that retains the individual character of each community
- ⤴ Infrastructure that supports home-based and online businesses

Things we're already doing	Things we're planning to do
Housing Strategy	Liveability strategy
Advocacy regarding internet and telecom issues	Local planning scheme review



CONSERVATION AND ENVIRONMENT

- ▲ Recycling, re-purposing and re-using
- ▲ A thriving, protected and diverse natural environment
- ▲ A Shire that adapts to and mitigates the effects of climate change

Things we're already doing	Things we're planning to do
Regional Climate Alliance	Advocate for and support weed management
Shire power sources from 100% renewable sources	Advocate for and support dieback management facilities
Shire facilities using solar power to reduce CO2 emissions	Work in conjunction with DBCA on the Porongurup Trails Master Plan
Advocate for and support management of feral animals	Better control of weeds moved around by earthmoving equipment on road verges

COUNCIL FACILITIES

- ▲ Town halls with good year-round amenity
- ▲ A range of community facilities that cater for all ages and demographics

Things we're already doing	Things we're planning to do
Mt Barker Swimming Pool Redevelopment	Liveability assessment
MOUs for community groups to use Shire facilities	Wilson Park Youth Precinct
Saleyards upgrades	Porongurup Hall and toilet upgrades
	Swimming Pool redevelopment
	Improve and adopt a collaborative approach to Rec Centre programming



STRATEGIC PRIORITIES

- Maintain and further develop Shire roads, drainage and pathways at appropriate standards.
- Develop and maintain flexible public open space for all to enjoy
- Long term planning and development guided by the Planning Vision
- Encourage development that is consistent with the individual character of towns
- Infrastructure that supports home based business
- Protection of natural environment
- Where possible, implement recycling / reuse capability and encourage proactive recycling of household waste
- Continue to develop an awareness of and appropriate response to effects of climate variation
- Town halls maintained to enable community use
- A range of community facilities that cater for all

KEY PILLAR – ECONOMY

GOAL

Develop and maintain a strong local economy that contributes to employment opportunities and a broad range of services



ASPIRATIONS

During the stakeholder engagement phase community members raised the following aspirations:

LOCAL BUSINESS

- ^ A strong and diverse local economy
- ^ Plantagenet as a place where businesses are supported to establish and grow

Things we're already doing	Things we're planning to do
Housing Strategy	Liveability assessment
Regional Collaboration	Improve traffic flows into Lowood Road with signage
Lobbying for the development of Yerriminup estate	Investigate and support additional child care services
	Local Planning Strategy Review
	Develop additional accommodation on the old depot site

TOURISM, ARTS & CULTURE

- ^ A vibrant community and visitor arts and culture program
- ^ Support tourism growth as an emerging sector

Things we're already doing	Things we're planning to do
Albany Highway Beautification Project	Trails development
Support tourism by funding support to Great Southern Treasures and the Mount Barker Tourism Inc Great Southern Treasures	Wilson Park upgrades
Regional Art and Culture Strategy	Review Local Planning Strategy
Establish Arts & Tourism Committee	Local Arts Strategy
Manage and display art collection	Engage with Regional Training Organisations

STRATEGIC PRIORITIES

- ^ Develop and implement policies and initiatives to attract inward migration and investment.
- ^ Businesses are encouraged and supported
- ^ Support festivals, events and activities that strengthen our sense of identity and celebrate our history and heritage
- ^ Support the provision of appropriate, accessible arts facilities and activities to encourage artistic and cultural expression
- ^ Tourism that capitalises on our natural assets without exploiting them

KEY PILLAR – PERFORMANCE & LEADERSHIP

GOAL

Maintain an open and accountable professional organisation providing leadership for the community



ASPIRATIONS

During the stakeholder engagement phase community members raised the following aspirations:

SHIRE GOVERNANCE

- ^ A Shire that listens to and considers the needs of its varied communities
- ^ A progressive Shire with diverse representation
- ^ A Shire that openly communicates with local residents and is transparent in its decisions and processes

Things we're already doing	Things we're planning to do
Shire newsletter and support Plantagenet News	Townsite forums and information sessions
Social media utilisation	Multiple points of access for consultation
Consultation and engagement policy	Improved organisational responsiveness and reporting
Regional collaboration	Investigate regional resource sharing and service delivery

STRATEGIC PRIORITIES

- ^ A Shire that listens and considers the needs of each community
- ^ A progressive Shire with diverse thinking
- ^ A Shire that is open and transparent with its community
- ^ Continuous improvement in service delivery



COUNCIL FORWARD PLANNING PROJECTS

The following projects are a combination of approved items and proposals currently being considered for future funding (This list is not exhaustive and excludes the annual roadworks program and plant purchases).

Project	Cost (Council)	Funding Source	Financial Year	Comment
Rec Centre Change Facility	\$ 60,000	LRCIP3	2022/2023	Total cost \$110,000, shared with Dep't of Education
Mount Barker Pathway renewal	\$ 156,000	LRCIP3 / Shire	2022/2023	Renew priority pathways in Mount Barker
Road drainage improvements	\$ 135,000	LRCIP3	2022/2023	
Council Audio Discussion and Amplification	\$ 23,000	LRCIP3	2022/2023	
Lighting of public open space and Council Assets	\$ 50,000	LRCIP3	2022/2023	Priority are trees and war memorial
Swimming Pool preparatory projects	\$ 400,000	LRCIP3	2022/2023	Mead Street reconstruction, retaining wall and demolish / remove some buildings
Lowood Road	\$ 234,500	LRCIP3	2022/2023	Reconstruction of Lowood Road North from SLK 0.04 – 0.53
Interpretive signage - Mount Barker Hill	\$ 20,000	LRCIP3	2022/2023	Boardwalk and walking trail signage plus directional road signage
Stage 1A O'Neill Road Trail	\$ 35,100	LRCIP3	2022/2023	7.3km unconstructed road reserve section from Location 5710 to Woodlands Road
Swimming Pool Stage 1B	Up to \$4.4m	Unfunded	2023/2024	Comprises refurbishment of the existing 50m pool, construction of a new learn to swim/ splash pool, new plant, filtration and solar heating, as well as development of the landscape and recreational facilities
Porongurup Hall and Toilet Upgrade	\$ 120,000	Unfunded	Future project	Total cost around \$300,000 for new internal external toilets, kitchen upgrade and new storeroom.
Albany Highway Roundabout Sculpture	\$ 110,000	Unfunded	Future project	
Asphalt war memorial car park and new bollards	\$ 40,000	Unfunded	Future project	Streetscape Committee project
Wilson Park redevelopment master plan	Unknown	Unfunded	Future project	Youth precinct
Mount Barker Hill downhill mountain bike trails and car park	Unknown	Unfunded	Future project	Included in BBRF 6 application
Saleyards - Roof over dirt pens	Unknown	Unfunded	Future project	Concept planning done, estimate \$600,000
Old depot housing development	Unknown	Unfunded	Future project	Concept only
FOGO and composting value-adding business case	Unknown	Unfunded	Future project	Concept only



COMMUNITY BOOK OF IDEAS

The following ideas were raised by the community during the community consultation phase of this plan. They will be considered by the Council in its future planning sessions over the four year life of this plan.

COMMUNITY

CHILDREN AND YOUTH

- Mobile youth services
- Running youth-focused events in townsites outside of Mt Barker
- Pre and post school childcare service
- Annual Youth Festival to celebrate Youth Week

SENIORS AND DISABLED

- Accessibility in Shire facilities – audit and upgrades
- Seniors' package – education around where to access assistance locally with incentives to try and join programs

HEALTH AND WELLBEING

- Advocacy at a State level regarding Plantagenet Hospital
- Trails interactive map on website

SUPPORT FOR COMMUNITY GROUPS AND VOLUNTEERS

- Policy development for community group requests for facility provisions and improvements
- Celebrating local volunteers through social media and newsletters
- Promotion of the benefits of becoming a volunteer

ENVIRONMENT

ROADS AND PUBLIC SPACES

- Public space clean-ups
- Tactile paving on footpath crossing points
- Junior Rangers Program
- Streetscaping, assisted by a working group with strong community engagement
- Main Roads advocacy

CONSERVATION AND ENVIRONMENT

- Development of Climate Action Plan
- Tip shop promotion
- Interpretive signage for natural attractions
- Leverage work of existing NRMs to promote initiatives

ECONOMY

LOCAL BUSINESS

- Publicise a small business concierge service, supporting new or emerging businesses with Shire processes
- Mt Barker CBD parking and traffic flows

TOURISM, ARTS & CULTURE

- Dual naming project
- Interpretive signage
- Art acquisition annually in conjunction with Art Award
- Public art policy to support contribution to public art development
- Art Gallery space meeting industry standards to support art development and exhibition
- Indigenous heritage interpretation signage
- Aim to display the Claude Hotchin art works currently in storage

PERFORMANCE

SHIRE GOVERNANCE

- Council meetings in townsites

